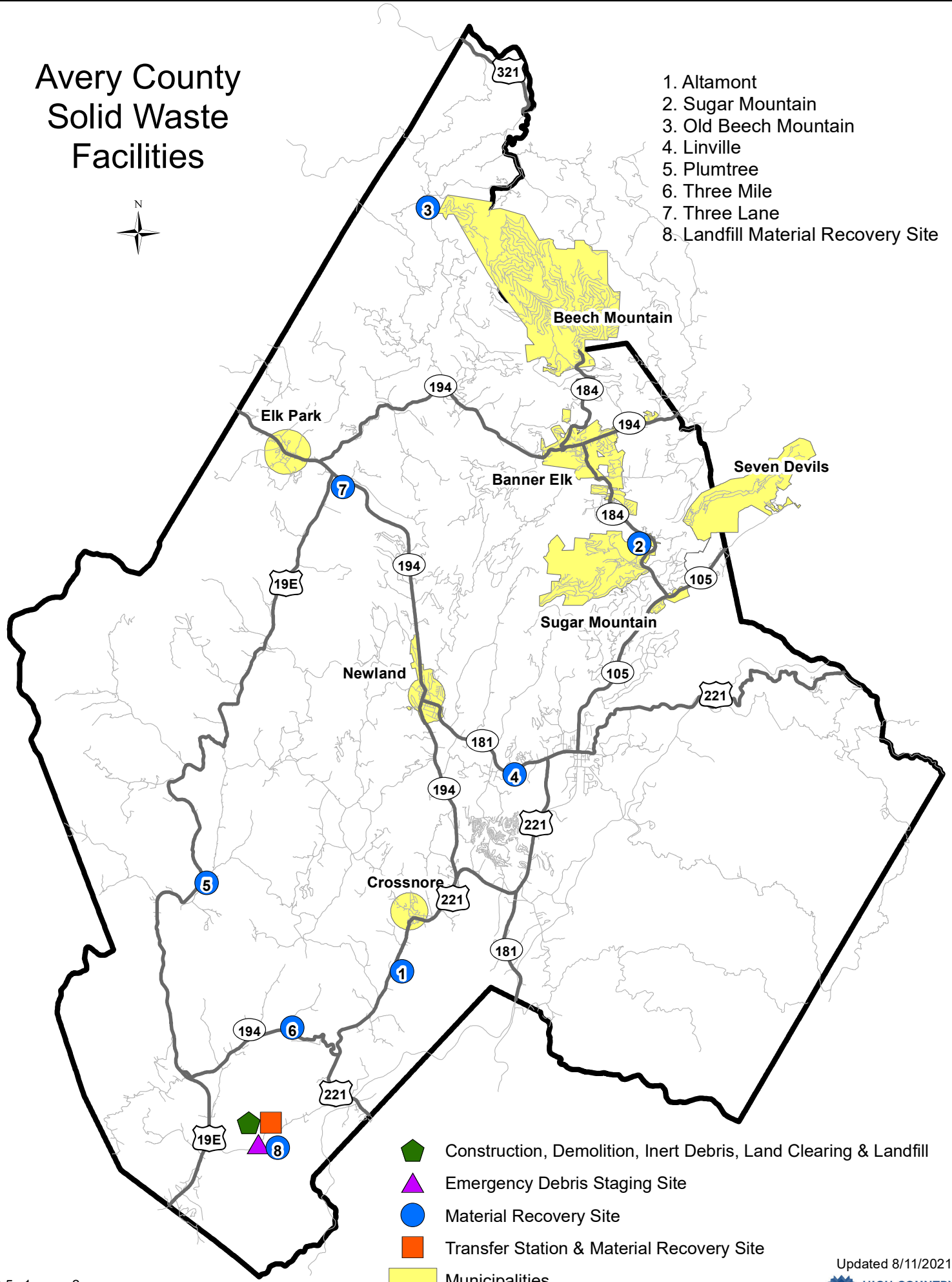







Avery County Solid Waste Facilities



1. Altamont
2. Sugar Mountain
3. Old Beech Mountain
4. Linville
5. Plumtree
6. Three Mile
7. Three Lane
8. Landfill Material Recovery Site



-  Construction, Demolition, Inert Debris, Land Clearing & Landfill
-  Emergency Debris Staging Site
-  Material Recovery Site
-  Transfer Station & Material Recovery Site
-  Municipalities

0 0.5 1 2
Miles